

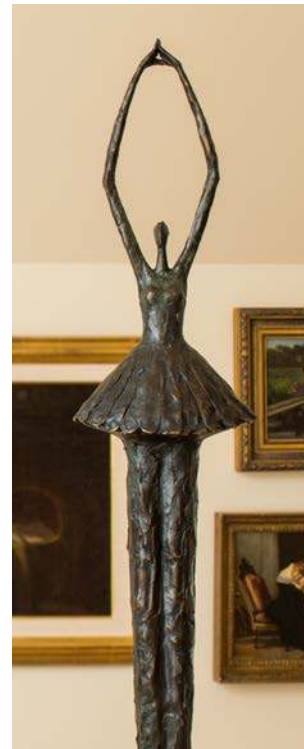
Corbin Bronze

New products / 2014



Corbin Bronze

New products / 2013





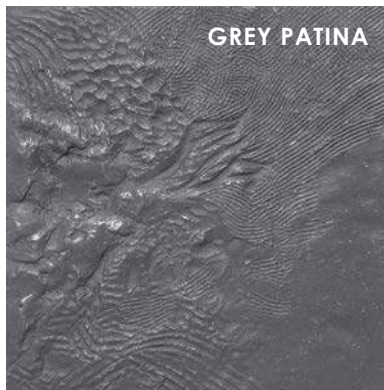
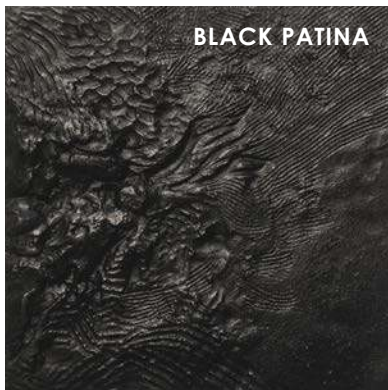
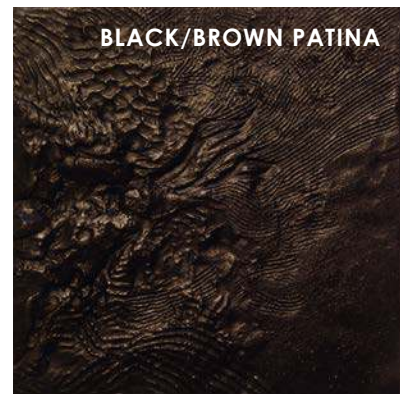
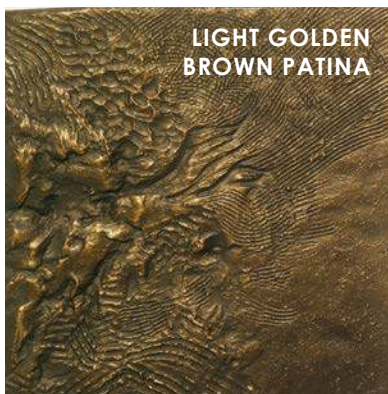
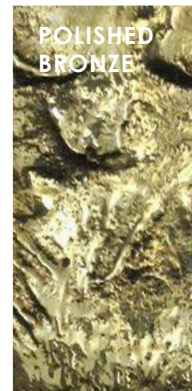
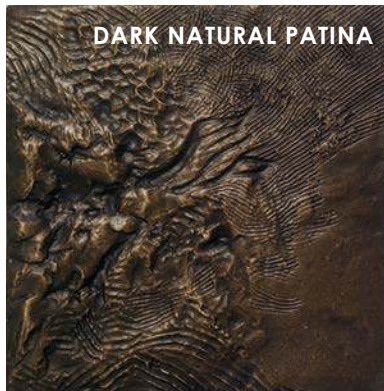
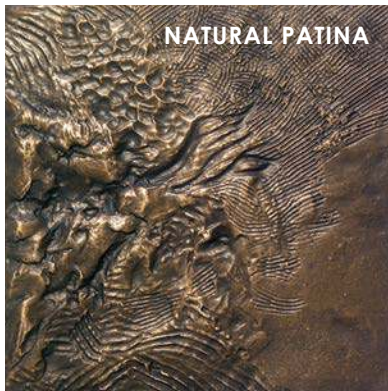
Patina Samples

Printed or digital patina samples are to be used as a guide for choosing a finish. Actual patina colors will vary.

Not all patinas are recommended for each piece. Please contact Corbin Bronze for recommendations, restrictions and approval.

Polished bronze and polished white bronze require special approval and separate quote from Corbin Bronze.

Please see our disclaimer located in the terms portion of our price list for a full explanation.



Tom Corbin

Biography and Artist Statement

Tom Corbin's introduction and subsequent career in sculpture has been based more on serendipity than calculation. Born in Dayton, Ohio in 1954; Tom's early fascination in art was inspired by his mother, an art teacher by trade. Despite studying painting and drawing at Miami University, Tom's original career pursuit was Business as an advertising executive. Tom's first brush with the third dimension came in a chance meeting with a bronze sculptor in 1982. Classes with this sculptor led to a deepened interest in bronze casting and thoughts of a career in art. In 1986, Tom left the secure confines of his advertising agency job for the unpredictability of life as a full time sculptor.

Now in his third artful decade, Tom's work appears in over 20 museums, galleries and showrooms. Individual collectors include Nicole Kidman, Emeril Lagasse, Jack Nicholson and the late Frank Sinatra. Public installation sites include the United Nations, The Kauffman Foundation, Paramount Pictures and Florida State University.

"I was initially attracted to the physicality and the dynamic nature of sculpture and was intrigued by the profound impact sculpture can have on an environment. As for bronze casting, the medium dictates a certain sense of tradition and order, which I continue to embrace. The challenge for me is to take the medium and create a tradition of something new."



Tom Corbin Collectors

Personal Collections

Mr. Alec Baldwin, New York, NY
Mr. & Mrs. George Brett, Kansas City, MO
Ms. Carol Burnett, Los Angeles, CA
Ms. Lily Chao, Hong Kong, China
Mr. Frank Fertitta, Las Vegas, NV
Ms. Ellen DeGeneres, Los Angeles, CA
Mr. Fred Dryer, Los Angeles, CA
Mr. Bill Dunn, Kansas City, MO
Ms. Petra Ecclestone, Los Angeles, CA
Prince Fazel, Royal Embassy of Saudi Arabia
Mr. & Mrs. Tom Hanks, New York, NY
Prince & Princess of Hanover, London, England
Mr. Ron Howard, Los Angeles, CA
Mr. Lamar Hunt, Dallas, TX
Ms. Nicole Kidman, Los Angeles, CA
Mr. & Mrs. Emeril Lagasse, New Orleans, LA and New York, NY
Mr. Carl Lewis, Los Angeles, CA
Mr. Cesar Millan, Los Angeles, CA
Mr. & Mrs. Wayne Newton, Las Vegas, NV
Mr. Jack Nicholson, Los Angeles, CA
Mr. Daniel Powder, Los Angeles, CA
Mr. & Mrs. Jay Pritzker, Chicago, IL
Mr. & Mrs. Ray Romano Malibu, CA
Mr. Steve Rosenberg, New York, NY
Mr. & Mrs. Arnold Schwarzenegger, Malibu, CA
Mr. & Mrs. Frank Sinatra, Los Angeles, CA
Mr. & Mrs. Peter Sloan, Kansas City, MO
Ms. Danielle Steel, San Francisco, CA
Mr. Lynn Swan, Pittsburgh, PA

among others

Corporate Collections

American Century Investors, Kansas City, MO
Bloomingdale's, New York, NY
Cleveland Chiropractic College, Kansas City, MO
Columbia Pictures, Los Angeles, CA
Dayton Hudson, Minneapolis, MN
Four Seasons Hotel, Hawaii
Honeywell, Minneapolis, MN
JE Dunn, Kansas City, MO
The Kauffman Foundation, Kansas City, MO
Marshall Fields, Chicago, IL
Merrill Companies, Overland Park, KS
Nieman Marcus, Dallas, TX
Novatel Hotels, Seoul, Korea
Paramount Pictures, Los Angeles, CA
Properties Group, Cary, NC
Quaker Oats, Chicago, IL
Royal Sporting House, Singapore
Turtle Wax, Chicago, IL
Warner Brothers Studio, London, England

among others

Public Collections and Installations

Bergstrom Foundation, Neenah, WI
Buck O'Neil Foundation, Kansas City, MO
Children's Fountain, Kansas City, MO
City Hall, Kansas City, KS
Country Club Plaza, Kansas City, MO
Firefighter's Memorial, Kansas City, MO
Florida State University, Tallahassee, FL
Hall of Famous Missourians, Jefferson City, MO
James Pendergast Memorial, Kansas City, MO
Kansas City Chamber of Commerce, Kansas City, MO
Kauffman Memorial Gardens, Kansas City, MO
Kauffman Stadium, Kansas City, MO
Kemper Museum of Contemporary Art, Kansas City, MO
Korea and Vietnam Memorial, Wyandotte Co., KS
The Lyric Opera, Kansas City, MO
Mid-America Regional Council, Kansas City, MO
Middletown Regional Hospital, Middletown, OH
Negro Leagues Baseball Museum, Kansas City, MO
Pinellas Sports Authority, St. Petersburg, FL
Pittsburg State University, Pittsburg, KS
Reverend John Williams Memorial, Kansas City, MO
Schuster Performing Arts Center, Dayton, OH
St. Joseph Public Library, St. Joseph, MO
St. Luke's Hospital Women's Center, Kansas City, MO
St. Mary's College, Omaha, NE
Vietnam Memorial, Richmond, MO
United Nations, New York, NY
United Nations Peace Plaza, Independence, MO
University of Missouri, Kansas City, MO
University of Oregon, Eugene, OR

among others

TV, Radio and Film Appearances

Transformers Dark of the Moon – Paramount Pictures
Selling New York – HGTV
Law & Order SVU – NBC
The Bachelor– ABC
It's Complicated – Universal Pictures
In Treatment – HBO
Obsessed – Screen Gems
Top Design – Bravo
Changing Lanes – Paramount Pictures
Cruel Intentions – Sony Pictures
Homes Across America – HGTV
Law & Order: Criminal Intent – NBC
Marketplace – National Public Radio
A Perfect Murder – Warner Brothers Pictures
Ransom – Touchstone Pictures
True Lies – 20th Century Fox Pictures

among others

Tom Corbin Process

The process of creating a bronze begins with the artist's completed sculpture. Tom models his work in wax, clay or plaster, which is supported internally with a wire "skeleton".

For pieces with elaborate detail and undercuts, the lost wax method is used. A flexible rubber mold is made around the original sculpture and reinforced with an outer plaster mold. The entire mold is then split open and the original sculpture is removed. The mold is then reassembled and filled with molten wax. After cooling, the wax duplicate is removed and coated with a ceramic slurry. The ceramic shell is then dried and heated in a kiln at 800°. The wax inside melts out or is "lost" creating an empty ceramic mold. Two thousand degree molten bronze is poured into the ceramic mold, which, upon cooling, is chipped off revealing a bronze duplicate of the original model.

For more symmetrical, low relief pieces such as furniture legs and lamp shafts, sand casing is the preferred method. The original sculpture pattern is placed in a metal box filled with extremely fine, clay like sand. As it is packed tightly around the pattern, the impression created in the sand serves as a mold of the original pattern. The sand mold is then split opened and the pattern removed. Molten bronze is then poured into the hollow interior of the mold creating an exact replica of the original sculpture.

With each method, the bronze casting is carefully inspected for imperfections, which are removed. The sculpture surface is then sandblasted and then chemically colored, or patinaed, through the use of heat and the artful hand of the patineur. The considerable handwork and the resulting variance in texture and color make each of Tom's works unique and one-of-a-kind.





Amelie

Artist: Tom Corbin
Edition 25
85"H, 14"D, 15"W
Bronze, black patina with verdigris
Light grey granite base



Aurora V

Artist: Tom Corbin
Edition 60
89"H, 14"D, 17"W
Bronze, green/brown patina
Light grey granite base



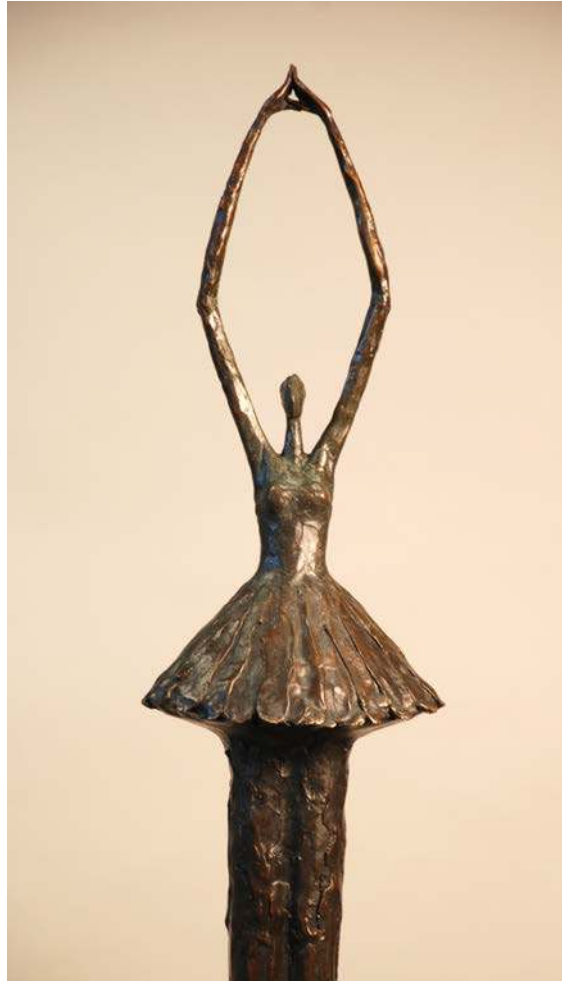
Avion

Artist: Tom Corbin
Edition 60
76.5"H, 12"D, 12"W
Bronze, green/brown patina with polished bird
Light grey granite base



Ballerina I

Artist: Tom Corbin
Edition 60
71"H, 8"D, 14.5"W
Bronze, green/brown patina with polished highlights
Cast stone base



Ballerina II

Artist: Tom Corbin
Edition 60
78"H, 7.5"D, 7.5"W
Bronze, green/brown patina with polished highlights
Cast stone base



Diva III

Artist: Tom Corbin
Edition 75
79"H, 14"D, 11"W
Bronze, green/brown patina
Black granite base



Diva IV

Artist: Tom Corbin
Edition 60
78"H, 14"D, 11"W
Bronze, black patina
Cast stone base



Female Reveal and Male Reveal with pedestals

Artist: Tom Corbin
Edition 60 each

Female Reveal with pedestal: 72.5"H, 9"D, 10"W

Male Reveal with pedestal: 72.75"H, 9"D, 10.25"W

Bronze, green/brown patina



Female Reveal II and Male Reveal II with pedestals

Artist: Tom Corbin

Female Reveal II with pedestal: 72"H, 9"D, 10"W
Edition 75

Male Reveal II with pedestal: 72"H, 9"D, 10"W
Edition 60

Bronze, green/brown patina



Ginger

Artist: Tom Corbin
Edition 20
32.5"H, 16.5"D, 41.5"W
Bronze, green/brown patina



Hand on Hip Tall

Artist: Tom Corbin
Edition 65
66.5"H, 13.5"D, 26"W
Bronze, green/brown patina



Horse and Rider II

Artist: Tom Corbin
Edition 60
77"H, 11.5"D, 18"W
Bronze, green/brown patina



T. Corbin Outdoor Collection

Jacqueline

Artist: Tom Corbin
Edition 12
98"H, 16.5"D, 19"W
Bronze, brown patina



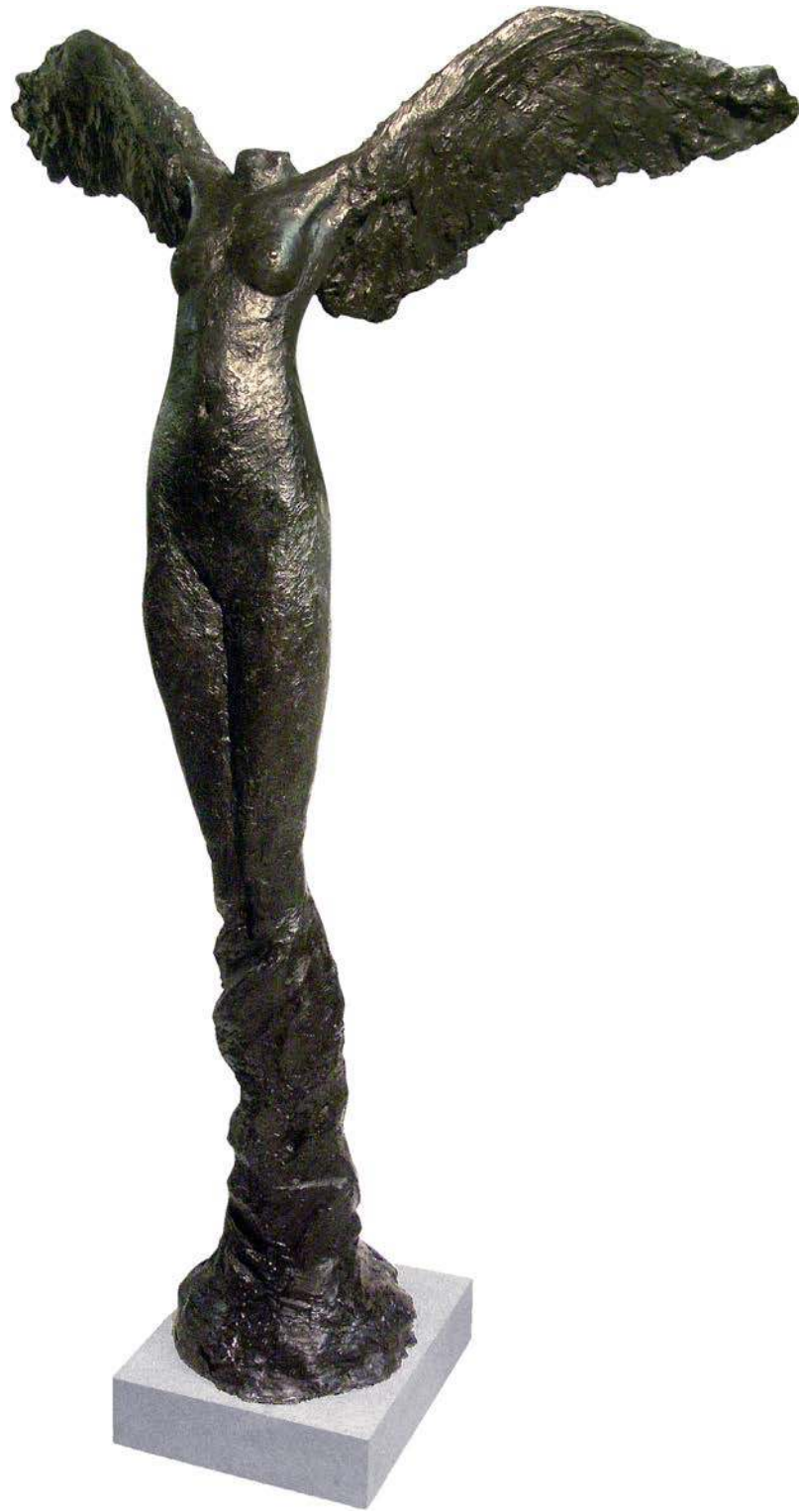
La Promenade Female

Artist: Tom Corbin
Edition 60
59.5"H, 16.5"D, 9"W
Bronze, green/brown patina



La Promenade Male

Artist: Tom Corbin
Edition 60
59.5"H, 19"D, 9"W
Bronze, green/brown patina



Luna II

Artist: Tom Corbin
Edition 35
73.5"H, 25"D, 45"W
Bronze, black/brown patina
Light grey granite base



Lyric

Artist: Tom Corbin
Edition 60
62.5"H, 10"D, 28"W
Polished bronze with dark natural patina



Man I

Artist: Tom Corbin
Edition 50
78.25"H, 12"D, 13"W
Bronze, green/brown patina
Light grey granite base



Woman I

Artist: Tom Corbin
Edition 50
77"H, 12"D, 12"W
Bronze, green/brown patina
Light grey granite base



Man in Repose

Artist: Tom Corbin
Edition 60
74"H, 16"D, 16"W
Bronze, green/brown patina



T. Corbin Outdoor Collection

Man On Diving Board

Artist: Tom Corbin
Edition 12
50"H, 48"D, 18"W
Bronze, brown patina



Mannequin II Tall

Artist: Tom Corbin
Edition 60
60"H, 13"D, 16"W
Polished bronze with black patina



Mannequin III Tall

Artist: Tom Corbin
Edition 60
60"H, 17"D, 22"W
Polished bronze with grey patina



Renaissance Man

Artist: Tom Corbin
Edition 60
62.5"H, 7.5"D, 8.5"W
Bronze, green/brown patina
Cast stone base



Renaissance Woman

Artist: Tom Corbin
Edition 60
62"H, 7.5"D, 7.5"W
Bronze, green/brown patina
Cast stone base



T. Corbin Outdoor Collection

Roxy Monumental

Artist: Tom Corbin
Edition 12
60"H, 30"D, 55"W
Bronze, black/brown patina



Sarah with Cupcake

Artist: Tom Corbin
Edition 50
61.5"H, 10"D, 7.5"W
Bronze, white patina with polychromed cupcake
Cast stone base



Spring

Artist: Tom Corbin
Edition 60
63"H, 23"D, 15"W
Bronze, green/brown patina with polychromed flowers
Indiana limestone base



Standing Man II

Artist: Tom Corbin
Edition 50
71.5"H, 14"D, 13.5"W
Bronze, green/brown patina
Light grey granite base



Standing Woman II

Artist: Tom Corbin
Edition 50
71"H, 14"D, 11.5"W
Bronze, green/brown patina
Light grey granite base



Tall Female Torso

Artist: Tom Corbin
Edition 60
72"H, 11.5"D, 11.5"W
Bronze, green/brown patina
Black granite base



Thalia

Artist: Tom Corbin
Edition 50
66.5"H, 19"D, 11"W
Bronze, green/brown patina
Light grey granite base



Woman Walking Tall

Artist: Tom Corbin
Edition 60
66.5"H, 13"D, 47.5"W
Bronze, green/brown patina



Young Dancer

Artist: Tom Corbin
Edition 40
68"H, 19"D, 26"W
Bronze, green/brown patina
Light grey granite base



Adam

Artist: Tom Corbin
Edition 60
40.5"H, 8.5"D, 13"W
Bronze, green/brown patina



Aurora IV

Artist: Tom Corbin
Edition 60
40.5"H, 7"D, 9.5"W
Bronze, green/brown patina



Bikini Bunnee

Artist: Tom Corbin

Edition 50

40"H, 7"D, 13.5"W

Bronze, light natural patina (left) or light natural patina with polychrome (right)



Bronze Bunnee

Artist: Tom Corbin
Edition 40
32"H, 8"D, 15.5"W
Bronze, black/brown patina



Bronze Bunnee

Artist: Tom Corbin
Edition 40
34"H, 8"D, 15.5"W
Bronze, white patina
Indiana limestone base



Discus Thrower II

Artist: Tom Corbin
Edition 25
20.5"H, 9"D, 7"W
Bronze, green/brown patina
Black marble base



Dominique

Artist: Tom Corbin
Edition 60
33.5"H, 15"D, 20"W
Bronze, green/brown patina



Elli

Artist: Tom Corbin
Edition 60
33"H, 12"D, 9"W
Bronze, green/brown patina



Emma

Artist: Tom Corbin
Edition 60
32.5"H, 9.5"D, 7"W
Bronze, green/brown patina



Eva Study

Artist: Tom Corbin
Edition 60
23"H, 5"D, 5"W
Polished bronze with black patina



Female Reveal and Male Reveal without pedestals

Artist: Tom Corbin
Edition 60 each

Female Reveal: 34.75"H, 9"D, 7.5"W

Male Reveal: 35"H, 9"D, 10.25"W

Bronze, green/brown patina



Female Reveal II and Male Reveal II

Artist: Tom Corbin

Female Reveal II: 34"H, 6.5"D, 6"W

Edition 75

Male Reveal II: 34"H, 6"D, 6"W

Edition 60

Bronze, green/brown patina



Female Walking

Artist: Tom Corbin
Edition 60
31"H, 6"D, 22"W
Bronze, green/brown patina



Flight with pedestal

Artist: Tom Corbin
Edition 60
28"H, 14"D, 14"W
Bronze, green/brown patina



Gabrielle

Artist: Tom Corbin
Edition 65
37"H, 7"D, 12"W
Bronze, green/brown patina



Girl on Raft and Sunbather with Hat

Artist: Tom Corbin

Edition 60 each

Girl on Raft (top): 3"H, 8.75"D, 19"W

Sunbather with Hat (bottom): 3"H, 8.75"D, 26"W

Bronze, green/brown patina

Ozark Fleuri stone base



Girl with Brush

Artist: Tom Corbin
Edition 30
24"H, 7"D, 7"W
Bronze, green/brown patina
Black marble base



Girl with Sunflower

Artist: Tom Corbin

Edition 50

33.5"H, 6.25"D, 5.25"W

Bronze, green/brown patina with polished sunflower

Cast stone base



Good Kitty

Artist: Tom Corbin
Edition 40
15.5"H, 5.75"D, 17.75"W
Bronze, black/brown patina



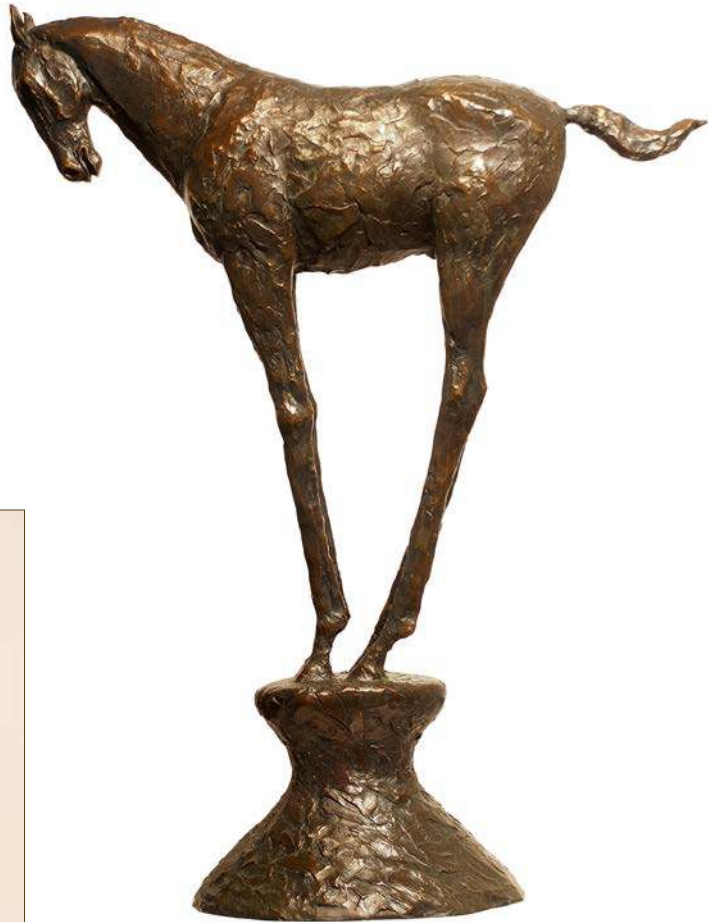
Horse Study #1

Artist: Tom Corbin
Edition 60
21"H, 7.5"D, 19"W
Bronze, green/brown patina



Horse Study #2

Artist: Tom Corbin
Edition 40
19"H, 12"D, 21"W
Bronze, green/brown patina



Horse Study #3

Artist: Tom Corbin
Edition 60
33"H, 9"D, 25.5"W
Bronze, green/brown patina



Isabella

Artist: Tom Corbin
Edition 50
33"H, 8"D, 7"W
Bronze, green/brown patina



Jazz I and II

Artist: Tom Corbin
Edition 60 each

Jazz I (left): 36.5"H, 13"D, 12.5"W

Jazz II (right): 31.25"H, 11"D, 33"W

Bronze, green/brown patina



Je Suis

Artist: Tom Corbin
Edition 25
17.75"H, 11"D, 6"W
Bronze, black/brown patina
Indiana limestone base



Le Nu

Artist: Tom Corbin
Edition 40
31"H, 12.5"D, 9.5"W
Bronze, green/brown patina



Little Black Dress

Artist: Tom Corbin
Edition 60
40"H, 6.25"D, 5.25"W
Bronze, black patina with polished highlights
Cast stone base



Luna III

Artist: Tom Corbin
Edition 60
36.5"H, 11.25"D, 13.5"W
Bronze, green/brown patina
Indiana limestone base



Man Study and Woman Study

Artist: Tom Corbin

Edition 50 each

Man Study: 34.75"H, 5.5"D, 5.5"W

Woman Study: 34.5"H, 5.5"D, 5.5"W

Bronze, green/brown patina

Indiana limestone base



Pear as a Figure

Artist: Tom Corbin
Edition 30
31.5"H, 6.5"D, 5"W
Bronze, green/brown patina
Black marble base



Reclining Nude

Artist: Tom Corbin

Edition 75

15"H, 9"D, 31"W

Bronze, green/brown patina



Renee

Artist: Tom Corbin
Edition 65
42"H, 11.5"D, 13"W
Bronze, green/brown patina



The Conversation

Artist: Tom Corbin
Edition 60
27"H, 8"D, 18"W
Bronze, green/brown patina



Torso with Apple

Artist: Tom Corbin
Edition 40
22.5"H, 7.25"D, 9.5"W
Bronze, green/brown patina with polychromed apple



Venus and Mars

Artist: Tom Corbin

Edition 60 each

Venus: 28"H, 6.5"D, 5"W

Mars: 28"H, 6.5"D, 5"W

Bronze, natural patina

Black marble base



Walking Nude with Pear

Artist: Tom Corbin
Edition 65
31"H, 4.5"D, 20.25"W
Bronze, green/brown patina with polychromed pear



Woman in Gown

Artist: Tom Corbin
Edition 50
35.5"H, 7"D, 7"W
Bronze, black/brown patina



Woman Walking II

Artist: Tom Corbin
Edition 60
39.5"H, 7.5"D, 28"W
Bronze, green/brown patina



Counterbalance

Artist: Tom Corbin
Edition 60
20"H, 8.75"D, 26"W
Bronze, black/brown patina





Dance Moderne II and III

Artist: Tom Corbin
Edition 60 each

Dance Moderne II (left): 15"H, 10.5"D, 4"W

Dance Moderne III (right): 15.5"H, 7.75"D, 3"W

Bronze, green/brown patina



Dance Moderne IV

Artist: Tom Corbin
Edition 60
17"H, 3.5"D, 14"W
Bronze, green/brown patina



Dance Moderne V

Artist: Tom Corbin
Edition 60
15.25"H, 5"D, 13"W
Bronze, green/brown patina



Dance Moderne VI

Artist: Tom Corbin
Edition 60
15.25"H, 7.5"D, 13"W
Bronze, green/brown patina



Female Walking maquette with Collector's Edition Book

Artist: Tom Corbin
312-page coffee table art book
Female Walking maquette: 12"H, 2.5"D, 8"W
Edition 200
Bronze, green/brown patina



Flight

Artist: Tom Corbin
Edition 60
15.5"H, 14"D, 8"W
Bronze, green/brown patina
Cast stone base



Girl in Bikini

Artist: Tom Corbin
Edition 30
17.75"H, 3.5"D, 3.75"W
Bronze, natural patina
Black marble base



Girl in Heels

Artist: Tom Corbin
Edition 40
20"H, 5.75"D, 12"W
Bronze, green/brown patina



Girl on Boat

Artist: Tom Corbin

Edition 60

15"H, 6.5"D, 17"W

Bronze, green/brown patina

Also shown: Girl with Lawnmower



Girl on Swing

Artist: Tom Corbin
Edition 60
12"H, 8.75"D, 16.5"W
Bronze, green/brown patina



Girl on Trapeze

Artist: Tom Corbin
Edition 60
12"H, 5"D, 4"W
Bronze, green/brown patina with polished highlights



Girl with Pear Study

Artist: Tom Corbin
Edition 60
23.75"H, 6.5"D, 4"W
Bronze, green/brown patina with polished pear



Girl with Lawnmower

Artist: Tom Corbin
Edition 60
14"H, 6.5"D, 17"W
Bronze, green/brown patina
Also shown: Cartwheel



Hiero-Woman and Hiero-Man

Artist: Tom Corbin
Edition 60 each

Hiero-Woman: 14.25"H, 3"D, 7"W

Hiero-Man: 13.75"H, 3.25"D, 7"W

Bronze, green/brown patina



Jacqueline Study

Artist: Tom Corbin

Edition 60

15"H, 3.5"D, 3"W

Bronze, green/brown patina



Lyric Study

Artist: Tom Corbin
Edition 75
13"H, 2.5"D, 5"W
Polished bronze with dark natural patina
Black marble base



Man on Diving Board Study

Artist: Tom Corbin
Edition 40
15"H, 8.25"D, 23.25"W
Bronze, green/brown patina



Mannequin I, II and III

Artist: Tom Corbin
Edition 60 each

Mannequin I (left): 13.75"H, 2.75"D, 3.5"W

Mannequin II (middle): 13.25"H, 2.75"D, 3.5"W

Mannequin III (right): 13"H, 3.5"D, 5"W

Polished bronze with polychrome (green/gold, pink and pale blue)



Reaching Torso

Artist: Tom Corbin
Edition 75
9"H, 3"D, 3"W
Bronze, green/brown patina



Roman Foot

Artist: Tom Corbin
Edition 30
5"H, 4.5"D, 11"W
Bronze, green/brown patina



Roxy Study II

Artist: Tom Corbin
Edition 60
15.5"H, 8"D, 16"W
Bronze, green/brown patina



Sasha

Artist: Tom Corbin
Edition 40
22.5"H, 4.75"D, 6"W
Bronze, green/brown patina



Seated Figure Studies III, I, II (left to right)

Seated Figure Study I

Artist: Tom Corbin
Edition 60
8"H, 5.5"D, 6.25"W
Bronze, black patina
Cast stone base



Seated Figure Studies III, I, II (left to right)

Seated Figure Study II

Artist: Tom Corbin
Edition 60
5.25"H, 6"D, 7"W
Bronze, black patina
Cast stone base



Seated Figure Studies III, I, II (left to right)

Seated Figure Study III

Artist: Tom Corbin
Edition 60
6.5"H, 6"D, 8.25"W
Bronze, black patina
Cast stone base



The Trudy

Artist: Tom Corbin
Edition 60
15"H, 4"D, 7.5"W
Bronze, green/brown patina
Black marble base



Woman Stretching

Artist: Tom Corbin
Edition 75
12"H, 3"D, 3.75"W
Bronze, green/brown patina



Bride and Groom

Artist: Tom Corbin
5.5"H, 1.5"D, 2.25"W
Bronze, green/brown patina



Dancer's Bust

Artist: Tom Corbin

6"H, 2"D, 2"W

Bronze, green/brown patina

Black marble base



Female Statuettes

Artist: Tom Corbin

9"H, 2"D, 2"W

From left to right: Woman with Arms Overhead, Come Hither,

Woman with Child, Woman Leaning, Dancer and Cover Up

Bronze, green/brown patina

Black marble base



Girl Waiting and Girl with Purse II Study

Artist: Tom Corbin

Girl Waiting (left): 7.75"H, 1.5"D, 2"W

Girl with Purse II Study (right): 7.25"H, 1.5"D, 1.5"W

Bronze, green/brown patina



Modest

Artist: Tom Corbin
10"H, 2"D, 2"W
Bronze, green/brown patina
Black marble base



Bear and Horse

Artist: Tom Corbin

Bear: 3"H, 1.5"D, 5.5"W

Horse: 4.75"H, 1.5"D, 6.25"W

Bronze, green/brown patina



Bull, Steer and Calf

Artist: Tom Corbin

Bull (top): 4.5"H, 1.5"D, 7"W

Steer (bottom left): 5"H, 2"D, 5.5"W

Calf (bottom right): 3"H, 1.25"D, 4"W

Bronze, green/brown patina



Frog and Turtle

Artist: Tom Corbin
Edition 30 each

Frog: 3"H, 4"D, 5"W

Turtle: 4"H, 4.5"D, 8"W

Bronze, green/brown patina



Leopards and Lion

Artist: Tom Corbin

Leopard #1 (top left): 2.75"H, 1"D, 5"W

Leopard #2 (top right): 3.25"H, 1"D, 4.5"W

Leopard #3 (bottom left): 3.25"H, 1"D, 4.5"W

Lion (bottom right): 3"H, 1"D, 5.5"W

Bronze, green/brown patina



Alexandra Table and Floor Lamps

Artist: Tom Corbin

Alexandra Table Lamp: 32"H, 7" diameter
40"H, 8" diameter also available

Alexandra Floor Lamp: 69"H, 10.5"D, 10.5"W

Bronze, natural patina

Shade separate



Alexandra Torchieres

Artist: Tom Corbin

Alexandra Floor Torchiere: 75"H, 10.5" diameter with bronze shade

Alexandra Floor Torchiere: 75"H, 10.5"D, 10.5"W with art glass shade

Alexandra Table Torchiere: 33"H, 7" diameter or 41"H, 8" diameter with art glass shade

Bronze, natural patina



Arbre Table and Floor Lamps

Artist: Tom Corbin

Arbre Table Lamp with two birds: 29.5"H, 7"D, 10"W

Arbre Floor Lamp with nest and two birds: 68"H, 20.75"D, 20.75"W

Bronze, green/brown patina

Shade separate



Bella Table and Floor Lamps

Artist: Tom Corbin

Bella Table Lamp: 35"H, 8.5" diameter

Bella Floor Lamp: 69"H, 14" diameter

Bronze, black patina

Shade separate



Cathedral Table and Floor Lamps

Artist: Tom Corbin

Cathedral Table Lamp: 34.5"H, 9.75" diameter

Cathedral Floor Lamp: 70.5"H, 14" diameter

Bronze, natural patina

Shade separate



Chesterfield Table and Floor Lamps

Artist: Tom Corbin

Chesterfield Table lamp: 30"H, 6.5"D, 7.75"W

Chesterfield Floor lamp: 68.5"H, 10"D, 11.5"W

Bronze, natural patina

Shade separate



Deco Male Torchiere

Artist: Tom Corbin
80"H, 15" diameter
Bronze, natural patina
Art glass shade
Black marble base



Eden Male and Female Table Lamps

Artist: Tom Corbin

Eden Male Table Lamp: 37"H, 6.5"D, 5"W

Eden Female Table Lamp: 37"H, 6.5"D, 5"W

Bronze, natural patina

Black marble base

Shade separate



Eden Male and Female Table Lamps

Artist: Tom Corbin

Eden Male Table Lamp: 37"H, 6.5"D, 5"W

Eden Female Table Lamp: 37"H, 6.5"D, 5"W

Bronze, grey patina

Clear lucite base

Shade separate



Fortezza I and II Table Lamps

Artist: Tom Corbin

Fortezza I Table Lamp (left): 34"H, 6.75" diameter

Fortezza II Table Lamp (right): 34"H, 6.75" diameter

Bronze, brown patina

Shade separate



Medallion Table and Floor Lamps

Medallion Floor Torchiera

Artist: Tom Corbin

Medallion Table Lamp: 33"H, 5.5" diameter

Medallion Floor Lamp: 68"H, 14" diameter

Medallion Floor Torchiera: 78"H, 16" diameter

Bronze, natural patina

Shade separate



Mesa I and II Table Lamps

Artist: Tom Corbin

Mesa I Table Lamp (left): 29"H, 5" diameter

Mesa II Table Lamp (right): 29.5"H, 5" diameter

Bronze, multicolor patina

Shade separate



Monterey I and II Floor Lamps

Artist: Tom Corbin

Monterey I Floor Lamp (left): 71"H, 14" diameter

Monterey II Floor Lamp (right): 71"H, 9.75"D, 11"W

Bronze, natural patina

Shade separate



Monterey I and II Table Lamps

Artist: Tom Corbin

Monterey I Table Lamp (left): 31.5"H, 5.5"D, 5.5"W

Monterey II Table Lamp (right): 31.5"H, 5.5"D, 5.5"W

Bronze, natural patina

Shade separate



Omega Table Lamps

Artist: Tom Corbin

Omega Table Lamp: 34.25"H, 7"D, 8"W

Omega Table Lamp without symbols: 34.25"H, 7"D, 7"W

Bronze, natural patina or white patina

Shade separate



Sierra Table Lamp

Artist: Tom Corbin
Front shown on left, back shown on right
31"H, 9"D, 11"W
Bronze, natural patina
Wood base
Shade separate



Single Pole Torchiere

Artist: Tom Corbin
78"H, 14" diameter
Bronze, natural patina
Art glass shade



Tango Table Lamp

Artist: Tom Corbin
39.5"H, 7"D, 11.5"W
Bronze, black patina
Shade separate



Tobago Table Lamp and Trinidad Table Lamp

Artist: Tom Corbin

Tobago Table Lamp (left): 21.5"H, 4.5"D, 10.25"W

Trinidad Table Lamp (right): 29"H, 5.5"D, 5.5"W

Bronze, natural patina

Shade separate



Totem IV Floor Lamp

Artist: Tom Corbin

66.5"H, 14" diameter

Totem I, II and III Floor Lamps also available (see table lamps for designs)

Bronze, natural patina

Shade separate



Totem I and II Table Lamps

Artist: Tom Corbin

Totem I Table Lamp (left): 30"H, 5.75"D, 5.75"W

Totem II Table Lamp (right): 30"H, 6" diameter

Bronze, natural patina

Shade separate



Totem III and IV Table Lamps

Artist: Tom Corbin

Totem III Table Lamp (left): 31.5"H, 6" diameter

Totem IV Table Lamp (right): 31.5"H, 6"D, 9"W

Bronze, natural patina

Shade separate



Trumpet Table Lamp

Artist: Tom Corbin
31"H, 6" diameter
25"H, 5" diameter and 39"H, 8" diameter also available
Bronze, natural patina
Shade separate



Two Pole Torchieres

Artist: Tom Corbin

Two Pole Torchiere: 78"H, 10"D, 12"W

Two Pole Torchiere with female figure: 78"H, 10"D, 12"W

Two Pole Torchiere with two birds: 81"H, 10"D, 12"W

Bronze, natural patina



Venus and Mars Table Lamps

Artist: Tom Corbin

Venus Table Lamp: 40"H, 6.5"D, 5"W

Mars Table Lamp: 40"H, 6.5"D, 5"W

Bronze, natural patina

Black marble base

Shade separate



Venus and Mars Table Lamps

Artist: Tom Corbin

Venus Table Lamp: 40"H, 6.5"D, 5"W

Mars Table Lamp: 40"H, 6.5"D, 5"W

Bronze, black patina with polished highlights

Cast stone base

Shade separate



Verona Table Lamp

Artist: Tom Corbin
29.5"H, 6"D, 6"W
Bronze, natural patina
Shade separate



Vessel Table Lamp

Artist: Tom Corbin
32.5"H, 6" diameter
Bronze, natural patina
Shade separate



Wrap Table Lamp

Artist: Tom Corbin
29.25"H, 5" diameter
Bronze, natural patina
Shade separate



Alexandra Sconces

Artist: Tom Corbin

Alexandra Double Sconce: 10.5"OAH, 8"D, 18"W

Alexandra Single Sconce: 10.5"OAH, 7.5"D, 6"W

Bronze, natural patina

Art glass shade



Arbre Sconce

Artist: Tom Corbin

14.5"H (top of socket), 7"D, 8"W

Bird on left shown (bird on right available for matching pair)

Bronze, green/brown patina

Shade separate



Cascara Sconce

Artist: Tom Corbin
10"H, 8.75"D, 7.5"W
Bronze, natural patina



Double Candle and Single Candle Sconces

Artist: Tom Corbin

Double Candle Sconce: 11.5"H (top of socket), 8"D, 11"W

Single Candle Sconce: 11.5"H (top of socket), 5.75"D, 3.5"W

Bronze, natural patina

Shade separate



Eden Male and Female Sconces

Artist: Tom Corbin
20"H (top of socket), 5.75"D, 3"W
Bronze, natural patina
Shade separate



Evon Sconces

Artist: Tom Corbin

Evon Double Sconce: 9"OAH, 5.5"D, 9.5"W

Evon Single Sconce: 9"OAH, 5.5"D, 6.75"W

Bronze, natural patina

Art glass shade



Fleur Sconces

Artist: Tom Corbin

Fleur Double Sconce: 15.25"OAH, 6"D, 10.5"W

Fleur Single Sconce: 15.25"OAH, 6.25"D, 5.5"W

Bronze, natural patina

Art glass shade



Torch Sconce

Artist: Tom Corbin
15"OAH, 6"D, 6.5"W
Bronze, natural patina
Ivory paper shade



Totem Sconces

Artist: Tom Corbin

Totem Sconce (left): 11"H (top of socket), 6.5"D, 5"W

Totem Sconce (right): 22"H (top of socket), 6.5"D, 5"W

Bronze, natural patina

Shade separate



Tulip Sconces

Artist: Tom Corbin

Tulip Double Candle Sconce: 15.5"H (top of bronze), 9.5"D, 12"W

Tulip Single Candle Sconce: 15.5"H (top of bronze), 5.5"D, 3.75"W

Bronze, natural patina



Alexandra Chandelier

Artist: Tom Corbin

24" diameter

29" minimum drop with hooked canopy

Custom drops available with bronze extension rods

Bronze, natural patina

Frosted glass shade (24", 27" or 36" diameter) or wispy white glass shade (24" diameter only)



Arbre Chandelier with three birds

Artist: Tom Corbin

27" diameter

39" minimum drop with hooked canopy

Custom drops available with bronze extension rods

Bronze, green/brown patina

Frosted glass shade (27" or 36" diameter)



Deux Lune Chandelier

Artist: Tom Corbin
24"D, 64"W
44" minimum drop with hooked canopy
Custom drops available with bronze extension rods
Bronze, natural patina
24" frosted glass shades or wispy white glass shades



Eight Candle Chandelier

Artist: Tom Corbin

32"D, 72"W

33" minimum drop with hooked canopy

Custom drops available with bronze extension rods

Shown with nest and three birds (top)

Shown with four female figures and bronze rope (bottom)

Bronze, natural patina



Medallion Chandelier

Artist: Tom Corbin
24" diameter
48" drop
Bronze, natural patina
Art glass shade



Six Candle Chandelier with two elk

Artist: Tom Corbin

24"D, 54"W

21" minimum drop with hooked canopy

Custom drops available with bronze extension rods

Bronze, natural patina



Totem Chandelier

Artist: Tom Corbin

24" diameter

32" minimum drop with hooked canopy

Custom drops available with bronze extension rods

Bronze, natural patina

Frosted glass shade (24", 27" or 36" diameter) or wispy white glass shade (24" diameter only)



Tulip Chandelier

Artist: Tom Corbin
32"D, 72"W
33" minimum drop with hooked canopy
Custom drops available with bronze extension rods
Bronze, natural patina



Alexandra Coffee Table

Artist: Tom Corbin
18"H (base), depth and width made to order
Cross stretchers optional
Bronze, natural patina
Glass separate



Antelope Coffee Table with antelope and sitting cat

Artist: Tom Corbin

17"H (base), depth and width made to order

Depth and width measured "rail to rail" (legs will extend beyond dimensions ordered)

Bronze, natural patina

Glass separate



Ashanti Coffee Table

Artist: Tom Corbin

18"H (base), depth and width made to order

Depth and width measured "rail to rail" (legs will extend beyond dimensions ordered)

Bronze, natural patina

Glass separate



Chevron and Corona Coffee Tables

Artist: Tom Corbin
18.25"OAH, 24"D, 48"W (oval)
Custom sizes available
Chevron (top)
Corona (detail shown bottom)
Bronze, natural patina
Polished Indiana limestone top (1.5")



Drum Coffee Table

Artist: Tom Corbin
19"H, 19" diameter (base)
Bronze, light golden brown patina
Glass separate (36" diameter shown)



Generic Rail Coffee Table

Artist: Tom Corbin

17"H (base), depth and width made to order

Depth and width measured "rail to rail" (legs will extend beyond dimensions ordered)

Bronze, natural patina

Glass separate



Medallion Coffee Table

Artist: Tom Corbin
17.5" OAH, depth and width made to order (round is custom)
Spiral detail standard (triangle, star and diamond also available)
Bronze, natural patina
Walnut top (1.5")



Medallion Coffee Table wide leg

Artist: Tom Corbin

18.5"OAH, depth and width made to order

Large spiral detail standard (bottom photo shows custom detail in place of large spiral)

Bronze, natural patina

Honed Hillsboro limestone top (2.125")



Ravenna Coffee Table

Artist: Tom Corbin
18"H (base), depth and width made to order
Cross stretchers optional
Bronze, natural patina
Glass separate



Tree Branch Coffee Table

Artist: Tom Corbin
18"H, 26.5"D, 29"W (base)
Bronze, brown patina
Glass separate (36" x 54" oval shown)



Troy Table

Artist: Tom Corbin

18"H, 30"D, 48"W (base)

Bronze, natural patina

Glass separate (inset glass across depth; glass extends beyond base across width)



Two Tier Coffee Table

Artist: Tom Corbin

20.5"OAH (base), depth and width made to order

Depth and width measured "rail to rail" (legs will extend beyond dimensions ordered)

Bronze, natural patina

Glass separate



Antelope Console Table with antelope and sitting cat

Artist: Tom Corbin

29"H or 35"H (base), depth and width made to order

Depth and width measured "rail to rail" (legs will extend beyond dimensions ordered)

Bronze, natural patina

Glass separate



Generic Rail Console Table

Artist: Tom Corbin

29"H or 35"H (base), depth and width made to order

Depth and width measured "rail to rail" (legs will extend beyond dimensions ordered)

Bronze, natural patina

Glass separate



Medallion Console Table demilune

Artist: Tom Corbin

35"OAH, 21"D, 53"W

Custom sizes available

Spiral detail standard (triangle, star and diamond also available)

Bronze, natural patina

Walnut top (1.5") or Polished Indiana limestone top (1.5")



Medallion Console Table oval

Artist: Tom Corbin

35"OAH, 20"D, 54"W

Custom sizes available

Spiral detail standard (triangle, star and diamond also available)

Bronze, natural patina

Walnut top (1.5")



Antelope Bench with antelope and sitting cat

Artist: Tom Corbin

21"OAH, 18"D, 42"W (standard size, not pictured)

Custom sizes available (18"D, 60"W shown above)

Depth and width measured "rail to rail" (legs will extend beyond dimensions ordered)

Bronze, natural patina

COL/COM, domed and mitered seat



Bienna Bench

Artist: Tom Corbin
17"OAH, 19"D, 19"W
Custom sizes available
Bronze, natural patina
COL/COM, boxed seat



Generic Rail Bench

Artist: Tom Corbin

21"OAH, 18"D, 42"W

Custom sizes available

Depth and width measured "rail to rail" (legs will extend beyond dimensions ordered)

Bronze, natural patina

COL/COM, domed and mitered seat



Horseleg Bench

Artist: Tom Corbin
18"OAH, 16"D, 20"W
Custom sizes available
Bronze, natural patina
COL/COM, domed and mitered seat



Scallop Bench

Artist: Tom Corbin

16.5"OAH, 14"D, 17"W

Custom sizes available

Depth and width measured "rail to rail" (legs will extend beyond dimensions ordered)

Bronze, natural patina

COL/COM, boxed seat



Six Legged Horn Bench and Horn Bench

Artist: Tom Corbin

Six Legged Horn Bench: 20"OAH, 18"D, 48"W

Horn Bench: 20"OAH, 16"D, 20"W (4 legs, not shown)

Custom sizes available

Bronze, natural patina

COL/COM, domed and mitered seat



Alexandra I and II Pedestal Tables

Artist: Tom Corbin

Alexandra I Pedestal Table (left): 22"H, 18" diameter

Alexandra II Pedestal Table (right): 22"H, 18" diameter

Bronze, natural patina



Antelope Side Table with antelope and sitting cat

Artist: Tom Corbin
22"H, 24" diameter or 27"H, 20" diameter (base sizes available)
Bronze, natural patina
Glass separate



Astin Pedestal and Astin Table

Artist: Tom Corbin

Astin Pedestal: 36"H, 12.5"D, 12"W

Astin Table: 28"H, 12.5"D, 12"W

Bronze, dark natural patina

Cast stone top



Bella Table

Artist: Tom Corbin
22"H, 15.5" diameter
Bronze, black patina



Bienna Table

Artist: Tom Corbin
22"H, 12"D, 12"W
Bronze, natural patina



Brenta Table

Artist: Tom Corbin
24"H, 18" diameter
Bronze, natural patina



Bulb Table and Bulb Table with leaves

Artist: Tom Corbin
22"H, 13" diameter
Bronze, brown patina with polished edge



Carlton and Dunhill Tables

Artist: Tom Corbin

Carlton Table (left): 26.5"H, 11" diameter

Dunhill Table (right): 22"H, 10"D, 19.5"W

Bronze, light golden brown patina



Cathedral Table

Artist: Tom Corbin
24"H, 18" diameter
Bronze, natural patina



Chesterfield Table

Artist: Tom Corbin
22"H, 24" diameter or 26"H, 24" diameter
Bronze, brown patina



Chevron and Corona Side Tables

Artist: Tom Corbin

Chevron Side Table (left): 27"OAH, 18" diameter

Corona Side Table (right): 27"OAH, 22" diameter

Sizes available: 27"OAH, 18" diameter; 27"OAH, 22" diameter; 27"OAH, 20"D, 25.5"W (oval)

Bronze, natural patina

Polished Indiana limestone top (1.5")



Colina and Ituri Column Tables

Artist: Tom Corbin

Colina Column Table (left): 23"H, 17.5" diameter

Ituri Column Table (right): 23"H, 17.5" diameter

Bronze, natural patina



Crescent and Half Moon Pedestal Tables

Artist: Tom Corbin

Crescent Pedestal Table (left): 20.75"H, 18" diameter
30"H, 18" diameter also available (Crescent)

Half Moon Pedestal Table (right): 20.75"H, 18" diameter
Bronze, natural patina



Drum Tables

Artist: Tom Corbin

Drum Table (top): 19"H, 19" diameter
Bronze, light golden brown patina

Drum Table Tall (bottom): 29.5"H, 19" diameter (base)
Bronze, brown patina
Glass separate (36" x 54" oval shown)



Fleur Table

Artist: Tom Corbin
23"H, 11"D, 17"W
Bronze, green/brown patina



Medallion Side Table

Artist: Tom Corbin
26"OAH, 26" diameter
Custom diameters available
Spiral detail standard (triangle, star and diamond also available)
Bronze, natural patina
Walnut top (1.5")



Parliament Table

Artist: Tom Corbin
22"H, 10"D, 16.5"W
Bronze, light golden brown patina



Reveal Pedestal

Artist: Tom Corbin
38.25"H, 9"D, 10"W
Bronze, green/brown patina



Sabra Table

Artist: Tom Corbin
23.25"H, 10"D, 17"W
Bronze, green/brown patina



Tree Branch Table with bird

Artist: Tom Corbin

30"H, 24.75"D, 36.5"W (base)

Bronze, natural patina

Glass separate (36" x 54" oval shown)



Tryke Table

Artist: Tom Corbin
23"H, 18"D, 15"W
Bronze, black/brown patina



Twig Table and Twig Table with bird and nest

Artist: Tom Corbin

Twig Table: 22"H, 12" diameter

Twig Table with bird and nest: 25"H, 12" diameter

15" diameter also available

Bronze, natural patina



Viceroy Table

Artist: Tom Corbin
22"H, 15" diameter
12" diameter also available
Bronze, natural patina



Virage Table

Artist: Tom Corbin
22.5"H, 12.5"D, 19"W (base)
Bronze, light golden brown patina
Glass separate (18"D, 27"W racetrack oval shown)
Antique ivory marble separate (1 1/8")



Venus and Mars Tables

Artist: Tom Corbin

Venus Table: 24"H, 12"D, 18"W

Mars Table: 24"H, 12"D, 18"W

Bronze, green/brown patina



Winston Table

Artist: Tom Corbin
23.5"H, 10.5"D, 15"W
Bronze, natural patina



Wishbone Table

Artist: Tom Corbin
22"H, 12" diameter
Bronze, natural patina



Evolution/Revolution Totem and Woman's Rites Totem

Artist: Tom Corbin

Edition 50 each

Evolution/Revolution Totem (left): 90"H, 13"D, 13"W

Woman's Rites Totem (right): 89"H, 13"D, 13"W

Bronze, black/brown patina

Indiana limestone base



Botanica

Artist: Tom Corbin

Edition 80

26"H, 6"D, 24"W

Bronze, multicolor patina with polished highlights



Cartwheel

Artist: Tom Corbin
Edition 80
20"H, 8.5"D, 19"W
Bronze, black patina



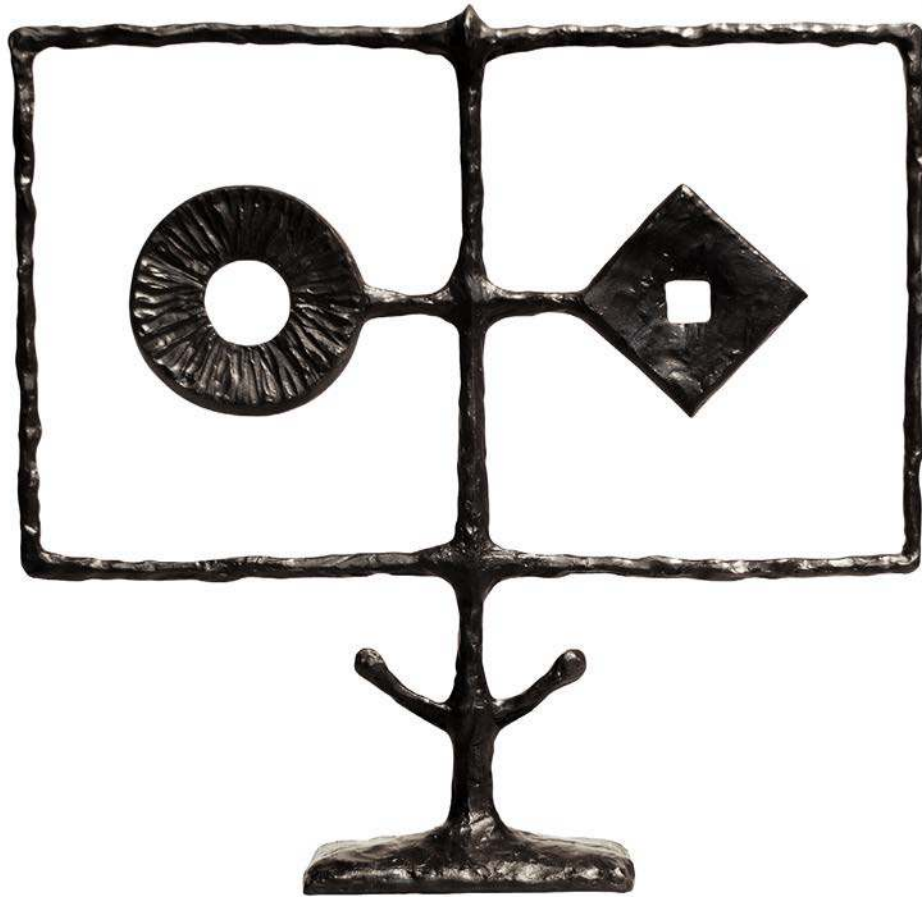
Cinque Fiori

Artist: Tom Corbin
Edition 80
28"H, 7"D, 29"W
Bronze, natural patina with polished highlights



Circle Study #1

Artist: Tom Corbin
Edition 80
25"H, 5"D, 18"W
Bronze, green/brown patina



Face Abstract

Artist: Tom Corbin
Edition 80
20"H, 4"D, 20.5"W
Bronze, black patina



Flower Study

Artist: Tom Corbin
Edition 80
23"H, 4.5"D, 18"W
Bronze, green/brown patina



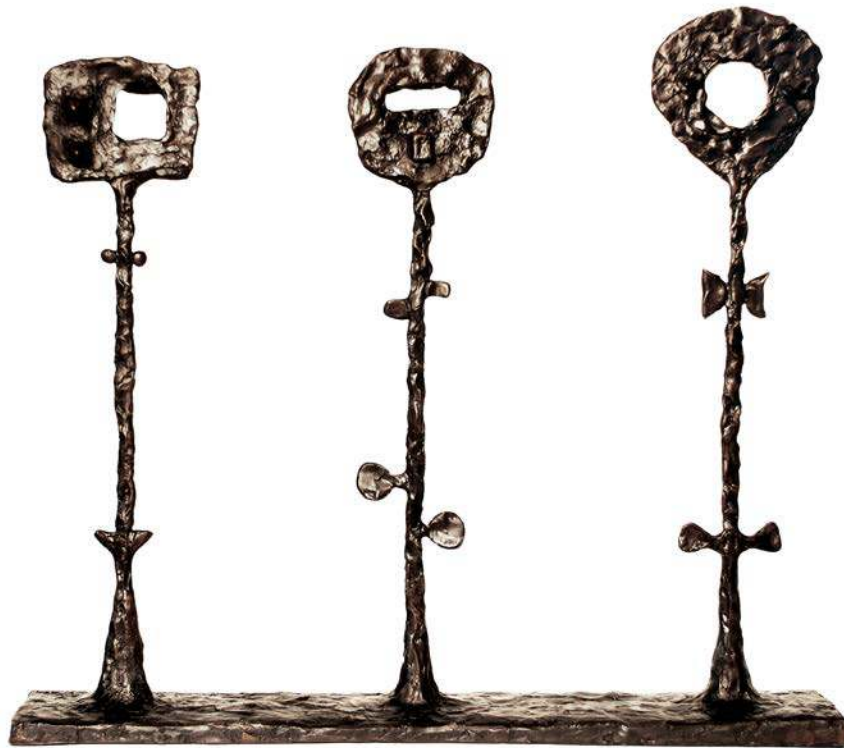
Tre Fiori

Artist: Tom Corbin

Edition 80

19"H, 6"D, 22"W

Bronze, green/brown patina with polished highlights



Tre Forma

Artist: Tom Corbin
Edition 80
18"H, 3.5"D, 20.5"W
Bronze, black/brown patina



Woman at the Center

Artist: Tom Corbin
Edition 80
28.5"H, 5"D, 23"W
Bronze, black/brown patina



Bella and Bellina Candlesticks

Artist: Tom Corbin

Bella Candlesticks (left)

16"H, 3.5" diameter (BCS-16)

19"H, 3.5" diameter (BCS-19)

23"H, 3.5" diameter (BCS-23)

Bellina Candlesticks (right)

12"H, 3.5" diameter (BCS-12)

15"H, 3.5" diameter (BCS-15)

18"H, 3.5" diameter (BCS-18)

Bronze, natural patina



Brenta Candelabra

Artist: Tom Corbin
Edition 40
29.5"H, 17"D, 17"W
Bronze, brown patina



Brenta Candlesticks

Artist: Tom Corbin

Edition 60 each

Brenta Candlestick I (left): 10.75"H, 4.5"D, 7.25"W

Brenta Candlestick II (middle): 13.5"H, 6.25"D, 7"W

Brenta Candlestick III (right): 16"H, 5.75"D, 6.5"W

Bronze, brown patina (top) or polished white bronze (bottom)



CS10-1

CS14-1

CS15-1

CS17-1

CS17-2

CS18-1

CS18-2

CS23-1

Totem Candlesticks

Artist: Tom Corbin

10"H, 3.5" diameter (CS10-1)

14"H, 3.5" diameter (CS14-1)

15"H, 3.5" diameter (CS15-1)

17"H, 3.5" diameter (CS17-1)

17"H, 3.5" diameter (CS17-2)

18"H, 3.5" diameter (CS18-1)

18"H, 3.5" diameter (CS18-2)

23"H, 3.5" diameter (CS23-1)

Bronze, natural patina



Trumpet Candlesticks

Artist: Tom Corbin
14"H, 5" diameter (left)
20"H, 6" diameter (middle)
28"H, 8" diameter (right)
Bronze, natural patina



Jupiter Andirons

Artist: Tom Corbin
17"H, 6"D, 8.5"W
Polished bronze (top) or polished white bronze (bottom)
Black steel shank



Mercury Andirons

Artist: Tom Corbin
20"H, 6"D, 7.5"W
Polished bronze (top) or polished white bronze (bottom)
Black steel shank



Zigzag Andirons

Artist: Tom Corbin
20.5"H, 6"D, 8.5"W
Polished bronze (top) or polished white bronze (bottom)
Black steel shank



Baako Bowl

Artist: Tom Corbin

2.5"H, 12"D, 39"W

Bronze, brown patina with polished edge



Bambara Bowl

Artist: Tom Corbin

3"H, 9"D, 37.5"W

Bronze, dark natural patina with polished highlights



Kongo Bowl

Artist: Tom Corbin
4"H, 10.25"D, 12.5"W
Bronze, multicolor patina



Makena Bowl

Artist: Tom Corbin

2.5"H, 10"D, 23"W

Bronze, brown patina with polished edge



Shona Bowl

Artist: Tom Corbin
3.75"H, 12"D, 19.5"W
Bronze, light golden brown patina



Single Stem Fiori

Artist: Tom Corbin

Edition 100 each

9" – 22.75"

Bronze, natural patina with polished highlights



Fiore I

Artist: Tom Corbin

Edition 100

9"

Bronze, natural patina with polished highlights



Fiore II

Artist: Tom Corbin

Edition 100

14"

Bronze, natural patina with polished highlights



Fiore III

Artist: Tom Corbin

Edition 100

15"

Bronze, natural patina with polished highlights



Fiore IV

Artist: Tom Corbin

Edition 100

19.5"

Bronze, natural patina with polished highlights



Fiore V

Artist: Tom Corbin

Edition 100

22.75"

Bronze, natural patina with polished highlights



Fiore VI

Artist: Tom Corbin

Edition 100

18"

Bronze, natural patina with polished highlights

Avion (*edition closing*)

Artist: Tom Corbin

Edition 60 each

Girl on Raft (top): 3"H, 8.75"D, 19"W (or left/right - but not for M/F pairs)

Sunbather with Hat (bottom): 3"H, 8.75"D, 26"W

76.5"H, 12"D, 12"W

Bronze, green/brown patina with polished bird

Bronze, white patina with polychromed cupcake

Polished bronze with black patina

Light grey granite base (note: not "bases")

Arbre Table and Floor Lamps

Artist: Tom Corbin

Monterey I Floor Lamp (left): 29.5"H, 7"D, 10"W

Arbre Floor Lamp with nest and two birds: 68"H, 20.75"D, 20.75"W

Bronze, green/brown patina

Black marble base (note: not "bases")

Shade separate (note: not "shades")

Antelope Coffee Table with antelope and sitting cat

Artist: Tom Corbin

17"H (base), depth and width made to order or 17"OAH

Depth and width measured "rail to rail" (legs will extend beyond dimensions ordered)

Cross stretchers optional

Bronze, natural patina

Glass separate (36" diameter shown)

Indiana limestone top (1.5")

Outline on photos: .25, P440C

Tom Corbin Artist Statement

I was initially attracted to the physicality and the dynamic nature of sculpture and was intrigued by the profound impact sculpture can have on an environment. As for bronze casting, the medium dictates a certain sense of tradition and order, which I continue to embrace. The challenge for me is to take the medium and create a tradition of something new.

My work over the last two decades has experienced quite an evolution, that from a representational artist to an instinctive artist. Where my early sculptures were modeled in a traditional manner, my current work is more abstract and serves as a metaphor for the human condition. The common thread running through my evolving style is my love of the figure as muse. As for my furniture designs, I would agree with Warhol when he said, "The line between art and design is often blurred. I float between sculpture and functional pieces incorporating similar images into each." Functional art, as a result, seems to be a more appropriate title.

My thought process in producing a new work is essentially a planned accident. I begin with a general concept in mind, but whether I end up with that concept is not important. A work in process has a mind of its own and can take you down a totally unexpected but more satisfying path.



Tom Corbin Biography

Tom Corbin's introduction and subsequent career in sculpture has been based more on serendipity than calculation. Born in Dayton, Ohio in 1954, Tom's early fascination in art was inspired by his mother, an art teacher by trade. Despite studying painting and drawing at Miami University, Tom's original career pursuit was Business as an advertising executive. Tom's first brush with the third dimension came in a chance meeting with a bronze sculptor in 1982. Classes with this sculptor led to a deepened interest in bronze casting and thoughts of a career in art. In 1986, Tom left the secure confines of his advertising agency job for the unpredictability of life as a full time sculptor.

Tom landed his first major public commission in 1988. Additional commissions followed, along with the financial freedom for Tom to develop his own "speculative" sculpture. During this period, Tom was also experimenting with furniture design, an area that would soon play a major role in the growth of his studio operation.

Today, Tom's work appears in 22 showrooms and galleries internationally. Individual collectors include Mr. and Mrs. Tom Hanks, Nicole Kidman, Danielle Steel and the late Frank Sinatra. Public installation sites include the United Nations, The Kauffman Foundation, the Firefighter's Memorial, the Children's Fountain, University of Oregon and Florida State University. In addition to important public and private collections, his work has found its way onto the sets of some major motion pictures, among them True Lies, A Perfect Murder, It's Complicated and Transformers.



Tom Corbin Collectors

Personal Collections

Mr. Alec Baldwin, New York, NY
Mr. & Mrs. George Brett, Kansas City, MO
Ms. Carol Burnett, Los Angeles, CA
Ms. Lily Chao, Hong Kong, China
Mr. Frank Fertitta, Las Vegas, NV
Ms. Ellen DeGeneres, Los Angeles, CA
Mr. Fred Dryer, Los Angeles, CA
Mr. Bill Dunn, Kansas City, MO
Ms. Petra Ecclestone, Los Angeles, CA
Prince Fazel, Royal Embassy of Saudi Arabia
Mr. & Mrs. Tom Hanks, New York, NY
Prince & Princess of Hanover, London, England
Mr. Ron Howard, Los Angeles, CA
Mr. Lamar Hunt, Dallas, TX
Ms. Nicole Kidman, Los Angeles, CA
Mr. & Mrs. Emeril Lagasse, New Orleans, LA and New York, NY
Mr. Carl Lewis, Los Angeles, CA
Mr. Cesar Millan, Los Angeles, CA
Mr. & Mrs. Wayne Newton, Las Vegas, NV
Mr. Jack Nicholson, Los Angeles, CA
Mr. Daniel Powder, Los Angeles, CA
Mr. & Mrs. Jay Pritzker, Chicago, IL
Mr. & Mrs. Ray Romano Malibu, CA
Mr. & Mrs. Arnold Schwarzenegger, Malibu, CA
Mr. & Mrs. Frank Sinatra, Los Angeles, CA
Mr. & Mrs. Peter Sloan, Kansas City, MO
Ms. Danielle Steel, San Francisco, CA
Mr. Lynn Swan, Pittsburgh, PA

among others

Corporate Collections

American Century Investors, Kansas City, MO
Bloomingdale's, New York, NY
Cleveland Chiropractic College, Kansas City, MO
Columbia Pictures, Los Angeles, CA
Dayton Hudson, Minneapolis, MN
Four Seasons Hotel, Hawaii
Honeywell, Minneapolis, MN
JE Dunn, Kansas City, MO
The Kauffman Foundation, Kansas City, MO
Marshall Fields, Chicago, IL
Merrill Companies, Overland Park, KS
Nieman Marcus, Dallas, TX
Novatel Hotels, Seoul, Korea
Paramount Pictures, Los Angeles, CA
Properties Group, Cary, NC
Quaker Oats, Chicago, IL
Royal Sporting House, Singapore
Turtle Wax, Chicago, IL
Warner Brothers Studio, London, England

among others

Public Collections and Installations

Bergstrom Foundation, Neenah, WI
Buck O'Neil Foundation, Kansas City, MO
Children's Fountain, Kansas City, MO
City Hall, Kansas City, KS
Country Club Plaza, Kansas City, MO
Firefighter's Memorial, Kansas City, MO
Florida State University, Tallahassee, FL
Hall of Famous Missourians, Jefferson City, MO
James Pendergast Memorial, Kansas City, MO
Kansas City Chamber of Commerce, Kansas City, MO
Kauffman Memorial Gardens, Kansas City, MO
Kauffman Stadium, Kansas City, MO
Kemper Museum of Contemporary Art, Kansas City, MO
Korea and Vietnam Memorial, Wyandotte Co., KS
The Lyric Opera, Kansas City, MO
Mid-America Regional Council, Kansas City, MO
Middletown Regional Hospital, Middletown, OH
Negro Leagues Baseball Museum, Kansas City, MO
Pinellas Sports Authority, St. Petersburg, FL
Pittsburg State University, Pittsburg, KS
Reverend John Williams Memorial, Kansas City, MO
Schuster Performing Arts Center, Dayton, OH
St. Joseph Public Library, St. Joseph, MO
St. Luke's Hospital Women's Center, Kansas City, MO
St. Mary's College, Omaha, NE
Vietnam Memorial, Richmond, MO
United Nations, New York, NY
United Nations Peace Plaza, Independence, MO
University of Missouri, Kansas City, MO
University of Oregon, Eugene, OR

among others

TV, Radio and Film Appearances

Transformers Dark of the Moon – Paramount Pictures
Selling New York – HGTV
Law & Order SVU – NBC
The Bachelor– ABC
It's Complicated – Universal Pictures
In Treatment – HBO
Obsessed – Screen Gems
Top Design – Bravo
Changing Lanes – Paramount Pictures
Cruel Intentions – Sony Pictures
Homes Across America – HGTV
Law & Order: Criminal Intent – NBC
Marketplace – National Public Radio
A Perfect Murder – Warner Brothers Pictures
Ransom – Touchstone Pictures
True Lies – 20th Century Fox Pictures

among others

Tom Corbin Image List



Image number: 1
Title: Firefighters Memorial
Medium: Bronze
Dimensions/size: Three figures. Monumental installation (larger than life-size)
Date: 1991
Location: Kansas City, Missouri
Client/agency: Kansas City Parks and Recreation
Project cost: \$135,000
Description: Sculptures to commemorate Kansas City firefighters who had died in the line of duty, including six who had perished in an explosion in 1988. City commissioners pointed to the depth of feeling that Corbin exhibited in the proposal as the deciding factor. Two of the three figures were mounted in the center of a circular fountain base 80-feet in diameter.
Image name: FirefightersMemorial.jpg



Image number: 2
Title: The Children's Fountain
Medium: Bronze
Dimensions/size: Six figures. Monumental installation (larger than life-size)
Date: 1995
Location: Kansas City, Missouri
Client/agency: Kansas City Parks and Recreation
Project cost: \$225,000
Description: The Children's Fountain is a multi-figured installation that captured the carefree, innocent quality of children at play.
Image name: TheChildrensFountain.jpg

Tom Corbin Image List



Image number: 3
Title: Kauffman Gardens
Medium: Bronze
Dimensions/size: Three figures. Monumental installation (larger than life-size)
Date: 2001
Location: Kansas City, Missouri
Client/agency: Kauffman Foundation
Project cost: \$175,000
Description: Three monumental figures frolick in a 100-foot long canal pool, the fourth figure welcomes visitors into the garden near the entrance with a peaceful fountain flowing from her shell.
Image name: KauffmanGardens.jpg



Image number: 4
Title: Girl with Dove
Medium: Bronze
Dimensions/size: Monumental installation (larger than life-size)
Date: 1997
Location: United Nations Peace Plaza, Independence, Missouri
Client/agency: Kansas City Chapter of the United Nations
Project cost: \$105,000
Description: The sculpture, depicting a woman releasing a dove overhead, pays tribute to the United Nations Peacekeepers that had passed away since the UN was founded. The piece was designed to convey not only the concept of peace, but also of hope.
Image name: GirlwithDove.jpg

Tom Corbin Image List



Image number: 5

Title: A Student's Life

Medium: Bronze

Dimensions/size: Three figures. 10 feet Monumental installation

Date: 2005

Location: Pittsburg State University, Pittsburg, Kansas

Client/agency: Private

Project cost: Private

Description: Designed for the university's Kansas Technology Center courtyard. The decided approach was based on the following criteria: it must be relevant to the student body and alumni, it should be unique and provocative and it should be dynamic. The theme is a moment captured in time, depicting a student's daily life, walking to class.

Image name: AStudentsLife.jpg



Image number: 6

Title: Red Dress

Medium: Bronze

Dimensions/size: Life-size

Date: 2010

Location: Saint Luke's Hospital, The Woman's Center

Client/agency: Saint Luke's Hospital

Project cost: Private

Description: The Women's Center at Saint Luke's is the first in the country dedicated to women's heart health. The sculpture was created to bring awareness to women's heart health with the symbolism of the red dress.

Image name: RedDress.jpg

Coffee Tables

c o r b i n  b r o n z e LTD



Alexandra



Antelope



Ashanti



Chevron



Drum



Generic Rail



Medallion



Medallion wide leg



Ravenna



Tree Branch



Troy



Two Tier

Console Tables



Antelope



Generic Rail



Medallion demilune



Medallion oval



Benches



Antelope



Bienna



Generic Rail



Horseleg



Scallop



Six Legged Horn

Occasional, Pedestal and Side tables

c o r b i n  b r o n z e LTD



Alexandra



Antelope



Bella



Bienna



Brenta



Carlton



Cathedral



Chesterfield



Chevron



Colina



Corona



Crescent



Drum



Drum Tall



Dunhill



Fleur



Half Moon



Ituri



Medallion



Parliament



Reveal Pedestal



Tree Branch



Twig



Venus



Mars



Viceroy



Virage



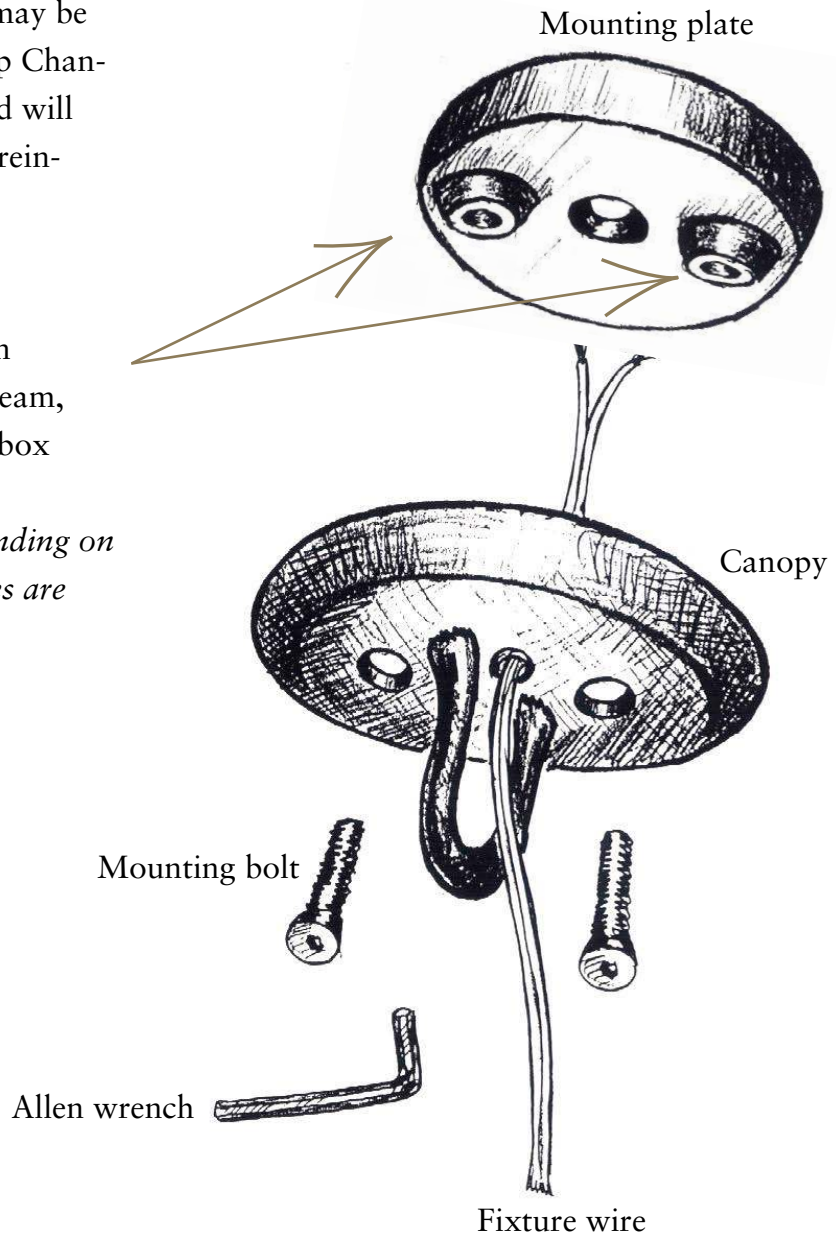
Winston

Custom installation may be required for Corbin Bronze chandeliers. Weight begins at 60 lbs and goes up, depending on specifications such as shade and drop. Reinforcement to ceiling may be required. Eight Candle and Tulip Chandeliers weigh 100 lbs and up and will require custom installation and reinforcement.

Instructions:

Drill whatever holes necessary in mounting plate for a) wooden beam, b) metal bracket or c) electrical box

Because location will vary depending on specific type of installation, holes are not pre-drilled





2012 Corbin Catalogue

Table of Contents

Introduction

New Products	2
Patina Samples	3
Biography and Artist Statement	4
Collectors	5
Process	6
Corbin Studio	7-8

Sculpture

Tall Sculpture <i>overview</i>	9
Tall Sculpture	10-39
Medium Sculpture <i>overview</i>	40
Medium Sculpture	41-76
Small and Miniature Sculpture <i>overview</i>	77
Small Sculpture	78-98
Miniature Sculpture	99-107

Lighting

Lighting <i>overview</i>	108-110
Table and Floor Lamps	111-140
Sconces	141-150
Chandeliers	151-158

Furniture

Furniture <i>overview</i>	159-160
Coffee Tables	161-172
Console Tables	173-176
Benches	177-182
Occasional Tables	183-204

Accessories

Accessories <i>overview</i>	205
Sculptural Accessories	206-215
Candlesticks	216-220
Andirons	221-224
Bowls	225-226

Tall Sculpture



Amelie



Aurora V



Avion



Ballerina I



Ballerina II



Diva III



Diva IV



Female Reveal and Male Reveal with pedestals



Female Reveal II and Male Reveal II with pedestals



Ginger



Hand on Hip



Horse and Rider II



La Promenade Female and Male



Luna II



Lyric



Man I



Woman I



Man in Repose



Mannequin II Tall



Mannequin III Tall



Renaissance Man and Woman



Sarah with Cupcake



Spring



Standing Man II



Standing Woman II



Tall Female Torso



Thalia



Woman Walking Tall



Young Dancer

Medium Sculpture

c o r b i n  b r o n z e LTD



Adam



Aurora IV



Bikini
Bunnee



Bronze
Bunnee



Bronze
Bunnee



Discus
Thrower II



Dominique



Elli



Emma



Eva
Study



Female
Reveal



Male
Reveal



Female
Walking



Gabrielle



Girl on
Raft

Sunbather
with Hat



Girl
with
Brush



Girl
with
Sunflower



Good Kitty



Horse
Study #1



Horse
Study #2



Flight
on pedestal



Isabella



Jazz I

Jazz II



Je Suis



Le Nu



Little Black
Dress



Luna III



Man
Study



Woman
Study



Pear as
a Figure



Reclining Nude



Renee



The Conversation



Torso with
Apple



Venus



Mars



Walking Nude
with Pear



Woman in
Gown



Woman
Walking II

Small Sculpture

c o r b i n  b r o n z e LTD



Dance Moderne I, II, III, IV

Female Walking

Girl in Heels

Girl on Boat

Girl on Swing



Girl with
Lawnmower

Hiero-Woman

Hiero-Man

Flight

Lyric Study

Man on Diving Board Study

Mannequin I, II, III



Girl with
Apple Study

Girl in
Bikini

Sasha

The Trudy

Woman
Stretching

Roxy Study II

Reaching

Roman Foot
Torso

Miniature Sculpture



Bride and
Groom

Dancer's
Bust

Female Statuettes

Girl Waiting
Girl with Purse II Study

Modest



Bear

Bull

Calf

Frog

Horse

Leopards

Lion

Steer

Turtle

Table Lamps



Alexandra



Arbre



Bella



Cathedral



Chesterfield



Eden



Eden



Fortezza



Medallion



Mesa



Monterey



Omega



Sierra



Tango



Tobago



Totem



Trinidad



Trumpet



Venus



Mars



Verona



Vessel



Wrap



Floor Lamps



Alexandra

Arbre

Bella

Cathedral

Chesterfield

Deco

Eden



Medallion

Monterey

Totem

Single Pole

Two Pole

Sconces



Alexandra



Arbre



Cascara



Eden



Evon



Fleur



Torch



Totem



Tulip



Alexandra



Arbre



Deux Lune



Eight Candle



Medallion



Six Candle Elk



Totem



Tulip

Sculptural Accessories



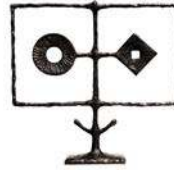
Evolution/
Revolution Totem Woman's
Rites Totem



Circle Study #1



Cartwheel



Face Abstract



Tre Forma



Woman at the
Center



Botanica



Cinque Fiori



Flower Study



Tre Fiori

Candlesticks



Bella

Bellina

Brenta

Brenta
Candelabra

Totem

Trumpet

Andirons



Jupiter

Mercury

Zigzag

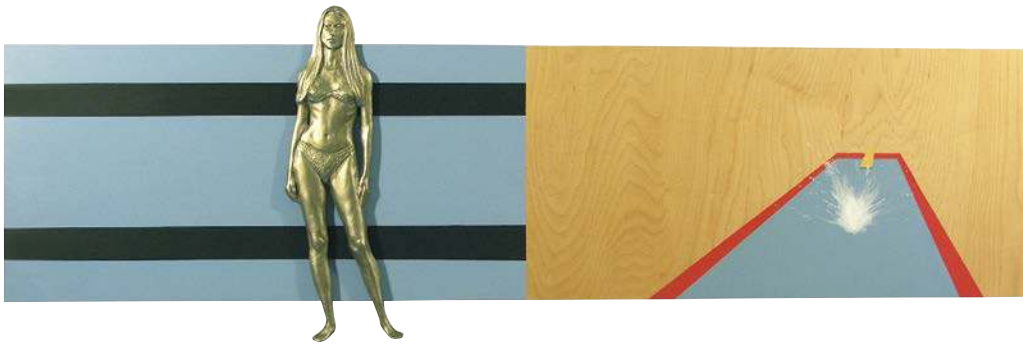
Bowls



Bambara

Kongo

Shona



Diver

Artist: Tom Corbin
15"H, 47"W
Acrylic on panel with white bronze bas relief
2005



Emily with Cupcake

Artist: Tom Corbin
50"H, 36"W
Acrylic on canvas
2013



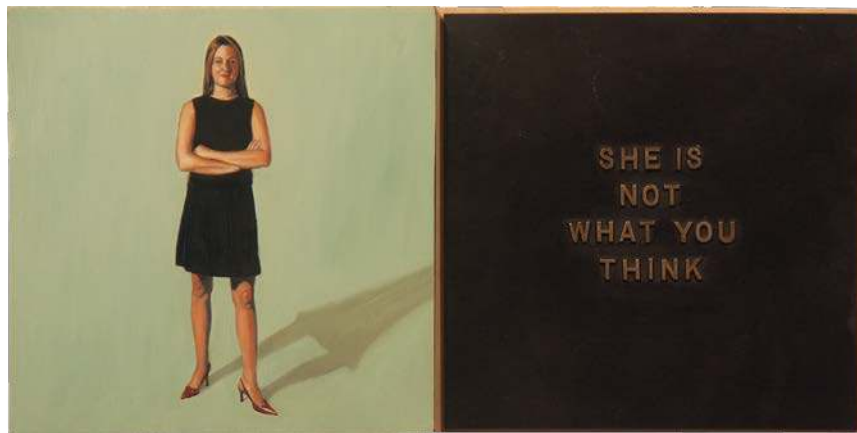
Seven Mile Beach

Artist: Tom Corbin
60.5"H, 81"W
Acrylic on canvas
2011



Roxy

Artist: Tom Corbin
71.5"H, 57"W
Acrylic on canvas
2013



She is Not What You Think

Artist: Tom Corbin
12"H, 24"W
Oil on panel with bronze relief panel
2004



Lawn Girl

Artist: Tom Corbin
16"H, 20"W
Oil on panel



The Lighthouse

Artist: Tom Corbin
72"H , 60"W
Acrylic on canvas
2013



Girl Undefined

Artist: Tom Corbin
14"H, 11"W
Oil on panel
2013



Girl with Beach Ball

Artist: Tom Corbin
Edition 25
17"H, 5"D, 13.5"W
Bronze, white patina



Madalena Study

Artist: Tom Corbin
14"H, 11"W
Oil on panel



Girl with Pinwheel

Artist: Tom Corbin
54"H, 77"W (estimated)
Oil and acrylic on canvas
2014



Molly

Artist: Tom Corbin
48"H, 48"W
Acrylic on canvas
2011



Blue Sky

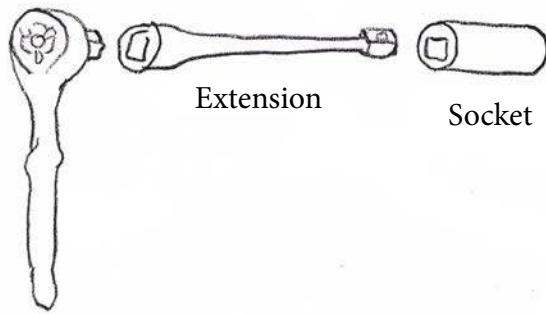
Artist: Tom Corbin
18"H, 14"W
Acrylic on canvas, framed
2011



Ali in Berlin

Artist: Tom Corbin
24'H, 18"W
Oil on panel
2009

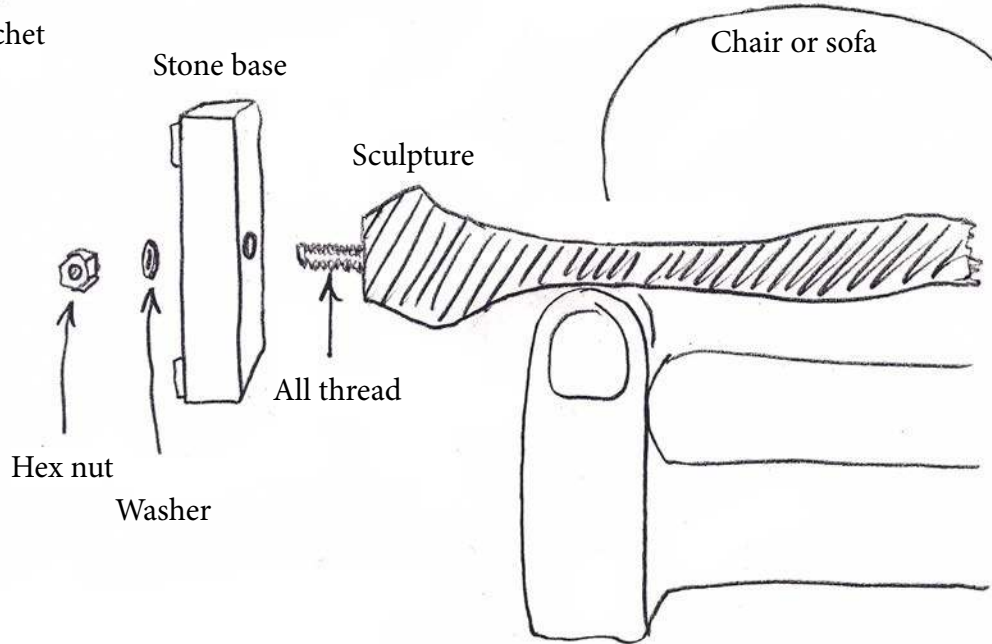
Tools needed



Ratchet

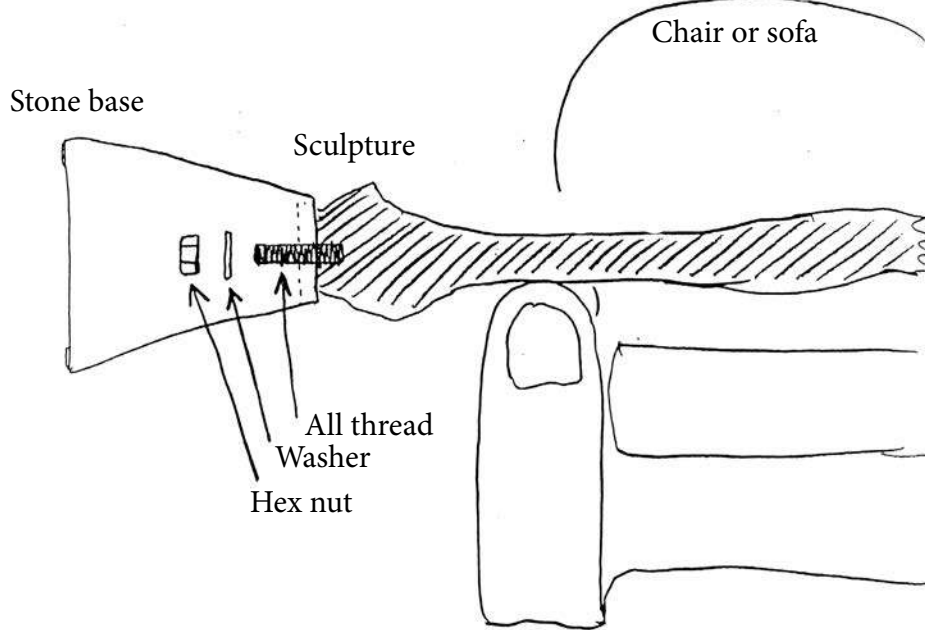
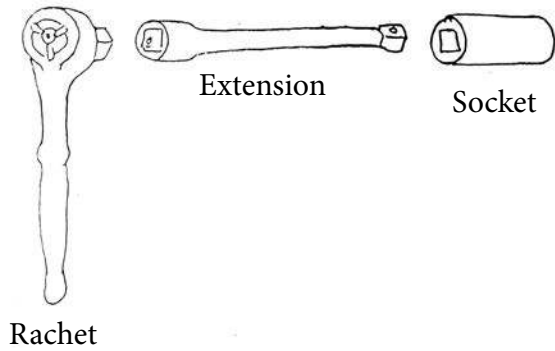
Extension

Socket



Ensure base is straight before tightening down
Any questions? Call Tim at Corbin Bronze 816 210 3116

Tools needed



Ensure base is straight before tightening down
Any questions? Call Tim at Corbin Bronze 816 210 3116

CORBIN BRONZE

firehouse



After 23 years in the River Market, Tom Corbin has moved to a turn-of-the-century Kansas City, Kansas, firehouse. Built in 1912, this historic building has an alluring past. From fire station, to city hall (complete with jail cell), to private residence, the building has been transformed into pristine gallery space, modern offices and artist's studio. A gated sculpture garden displays more of Tom's work outside. And, yes, be reassured that the intact brass fire pole still works.



CORBIN BRONZE

sculpture garden

